

Quantil is the leading supplier of young vegetable and wallflower plants to the garden centre retail market

Quantil Limited is a family-run horticultural business based in Lancashire. With over six-decades of agricultural and horticultural experience, the Symondson family established the glasshouse aspect of their production in 1994. Alongside of this, the Symondsons continue to run Quantil Agriculture Ltd, which comprises a 1,000 acre arable farm and seed processing mill.

Our horticultural business now boasts 14 hectares (100,000 sq. m), supplied with water from our own 10,000 cubic metre water lagoon. We are the leading supplier of vegetable, herb, strawberry and ornamental plants to garden retail and commercial agricultural sectors. We continue to grow in size and scale, supplying a rich variety of products

to UK farmers and gardeners.

At Quantil we understand that quality of product, presentation, and service, are paramount to meeting our retail clients' needs. With over 200 types of plant and a keen eye on growing trends, we are able to comprehensively cater to a large market, adjusting our catalogue accordingly.

Our professionally designed packaging is both smart and vibrant, offering clear and helpful information for plant care. We offer a flexible delivery service, and are able to distribute our products across the UK four days a week.



Contents

- 01** Quantil - who we are/
history plus contents
- 02** Why buy from Quantil/
labels and POS
- 03** Ordering and delivery system
- 04** Strip veg
- 05** 8.5cm pot veg
- 06** 8.5cm herb/
1L herb
- 07** Carry pack sweet pea /
8.5 connoisseur sweet pea/
Carry pack strawberry
- 08** 8.5cm strawberries/
Grafted veg/
Chilli micro
- 09** Chilli pepper/Sweet potato/
Pea and bean
- 10** Heritage Tomato/
1L veg
- 11** Autumn veg/
Wallflower
- 12** Reserve form

Office Contacts:

Anita Lea

Anne Leyland

Tel: 01695 573245 (option 1)

info@quantil.co.uk

Field Sales North:

Mark Clementson

Sales Director

Mobile: 07799 430368

mark.clementson@quantil.co.uk

Field Sales South:

Peter Davies

Mobile: 07764 692713

peter.davies@quantil.co.uk

Quantil

GROWING FOR GROWERS

Quantil Ltd, Mere House
Nurseries, Jacksmere Lane,
Scarisbrick, Lancashire,
L40 9RT

Information and pricing are correct at
time of printing and may be subject to
change at the discretion of Quantil Ltd.

Why buy from Quantil

Complete grow your own solution

We offer a one stop shop for all your pack vegetable, pot vegetable and pot herbs, as well as additional grow your own promotions.

Deliveries 4 days a week

We deliver Tuesday to Friday allowing you to place multiple orders per week therefore keeping stock fresh and allowing you to react to changes in weather conditions.

Over 200 varieties available

A comprehensive range of vegetable and herb plants available from early February through to the end of September.

Online ordering system

Featuring live availability, order quickly and easily from your PC, laptop, tablet or smart phone.

Quality grown plants

With over 50 years of vegetable production our expertise means customers can be confident in always

receiving a product grown to the highest standards.

Full POS packages

All customers receive our full POS package including header boards to bring colour and life to your grow your own area.

Small minimum order

With our delivery system customers are able to order the equivalent to approximately half a Danish trolley on a regular basis to keep stock looking fresh.

Labels and POS



Ordering and Delivery System

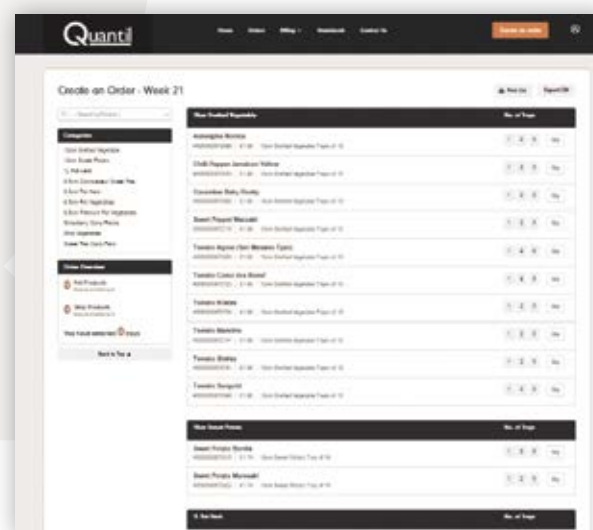
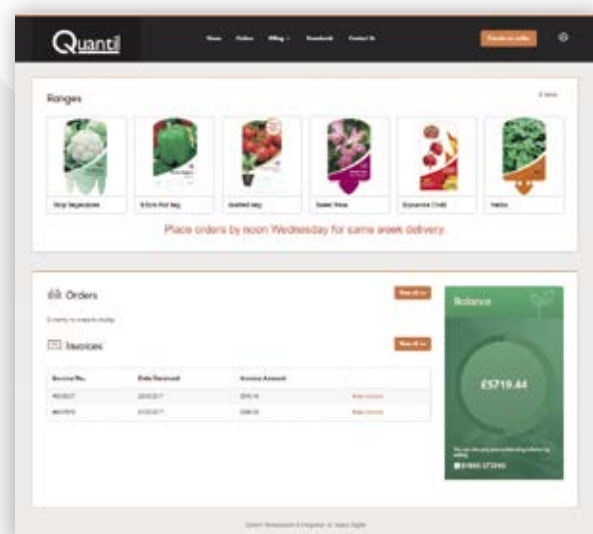
Ordering

Our easy to use web shop is the fastest and easiest way to order. Live availability gives you confidence you will receive what you require. Instant confirmations via email in Excel confirm your order has been received. Fully responsive to any type of device whether using pc, smart phone or tablet.

Delivery

Quantil's unique delivery system is designed to give you maximum buying flexibility enabling you to order little and often, thereby minimising waste and maximising your sales by keeping stock looking fresh.

We send our stock in palletised boxes through our courier network enabling us to deliver stock in to store within 24 hours of your order being despatched with a small minimum order of just 30 trays. We deliver 4 days a week, Tuesday through to Friday, allowing you to place multiple orders per week if required. We are able to offer same week delivery if orders are received prior to Wednesday 10am.



Web Shop from Quantil

A fully responsive online web shop from Quantil Ltd. Giving customer access to live availability data, with the ability to create an order via PC, laptop, tablet or smartphone.

This modern, forward thinking web shop is designed to be customer specific, integrating customer pricing details, account information and range with live availability data. Its user-friendly ordering interface is designed to make the ordering of stock as quick and easy as possible. Customers are also able to view account information such as invoices and credit notes, as well as an up to date account balance through their personal dashboard.

Never have to ring up again to get up to date availability, chase copies of invoices or ask for a confirmation of your order. All this is available through Q Web shop

Contact the office to register now and receive your unique login to start ordering.

Strip Vegetable Range

Variety	Variety
Aubergine Moneymaker	Lettuce Green Oak Leaf
Bean Barlotto	Lettuce Iceberg
Bean Broad	Lettuce Little Gem
Bean Broad Dwarf Patio	Lettuce Lollo Rosso
Bean Climbing French	Lettuce Radicchio
Bean Climbing French Purple	Lettuce Red Little Gem
Bean Edamame	Lettuce Red Salad Bowl
Bean French Dwarf	Lettuce Romaine
Bean Runner	Mangetout
Bean Runner Dwarf Patio	Marrow
Beetroot	Nasturtium (Edible)
Beetroot Golden	Onion Mammoth White
Beetroot Mixed	Onion Red
Black Kale	Onion White
Broccoli	Onion Yellow Globe (winter)
Broccoli Sweet Stem	Pak Choi Red
Brussel Sprout	Pak Choi White
Brussel Sprout Red Ball	Parsnip
Butternut Squash	Pea
Cabbage Pointed (Sweetheart)	Pea Dwarf Patio
Cabbage Red	Pea Sugar Snap
Cabbage Round	Purple Sprouting Broccoli
Cabbage Savoy	Radish Mixed
Cabbage Spring	Rocket Wild
Cabbage Winter	Salad Leaf Oriental Mix
Cabbage Pointed Red	Salad Leaf Spicy Mix
Carrot Baby Round	Salad Leaf Italian Mix
Carrot Chantenay	Shallots
Carrot Rainbow Mixed	Spinach
Cauliflower	Spinach Baby Leaf
Cauliflower Romanesco	Spring Onion Red
Celeriac	Spring Onion White
Celery	Sunflower
Chard	Swede
Chilli Pepper	Sweet Pepper
Courgette	Sweetcorn Baby
Courgette Golden	Sweetcorn Extra Sweet
Courgette Patio star	Turnip
Cucamelon	
Cucumber F1	
Cucumber Mini	
Cucumber Ridge	
Curly Kale	
Curly Kale -Red	
Globe Artichoke	
Kohl Rabi	
Lambs Lettuce	
Leek	
Lettuce Baby Leaf Mixed	
Lettuce Butterhead	
Lettuce Cos	



Varieties

Our range of strip vegetables consists of over 80 varieties and offer fantastic value for money. Our bespoke packaging is designed with shelf life and profitability in mind. The single volume of compost helps plants share available water without drying out in the corners and the small foot print maximises turn over per square metre. Large colourful lock in labels mean an attractive presentation in store. This alongside our POS package will add colour and give a real lift to your grow your own area.

Availability

Spring/Summer Wk 9 to Wk 29

Autumn Wk 30 to Wk 40



8.5cm Pot Vegetable Range

Core Range

Variety	
Aubergine	Black Beauty
Butternut Squash	Metro
Chilli Pepper	Apache
Chilli Pepper	Cayenne
Chilli Pepper	Cheyenne (Patio)
Chilli Pepper	Habanero Paper Lantern
Chilli Pepper	Jalapeno
Chilli Pepper	Scotch Bonnet
Courgette	El Greco
Courgette	Golden Jemmer
Marrow	Long Green Bush
Melon	Cantaloupe
Melon	Honey Bun
Pumpkin	Jack O'Lantern
Sweet Pepper	Green 'Bell Boy'
Sweet Pepper	Red 'New Ace'
Sweet Pepper	Sweet Banana
Sweet Pepper	Yellow 'Yellow Bell'

Variety	
Tomato	Ailsa Craig
Tomato	Alicante
Tomato	Baby Plum Lucinda
Tomato	Beefmaster
Tomato	Black Russian
Tomato	Brandy Wine Heritage
Tomato	Cherokee Heritage
Tomato	Gardeners Delight
Tomato	Moneymaker
Tomato	Roma
Tomato	Shirley
Tomato	Sungold
Tomato	Sweet Aperitif
Tomato	Tigerella Heritage
Tomato	Totem
Tomato	Tumbler
Tomato	Tumbling Tom Red
Tomato	Tumbling Tom Yellow

Varieties

Our 8.5cm square pots contain a considerably larger volume of compost than the standard 9cm round pots on the market, meaning a greater perceived value to the customer and better shelf life in store. Large colourful lock in labels

makes for strong presentation. We have over 60 varieties to choose from including 20 different tomatoes from old favourites such as Gardeners Delight and Shirley to more unusual Heritage varieties such as Tigerella.



Premium Range

Variety	
Aubergine	Pinstripe
Chilli Pepper	Hot Banana
Chilli Pepper	Hungarian Black
Courgette	Shooting Star
Courgette	Summer Ball
Cucumber	Crystal Lemon
Cucumber	F1 Femspot
Cucumber Mini	Hana
Cucumber Ridge	Perfection
Cucumber	Tiny Tot (Snack)
Patio Pepper	Balconi

Variety	
Patio Pepper	Terrazzi
Sweet Pepper	Snack Pepper
Sweet Pepper	Thor
Tomato	Chocolate Cherry
Tomato	Crokini
Tomato	Goldwin
Tomato	Green Zebra
Tomato	Lizzano
Tomato	Peardrop
Tomato	Red Alert
Tomato	Riesling
Tomato	Tomatoberry

Varieties

Expand your range with these selected varieties from new and interesting breeding to complement our traditional core range.

8.5cm Pot Herb Range

Variety	
Balm	Lemon
Basil	Greek
Basil	Purple
Basil	Sweet
Borage	
Catmint	(Nepeta Faassenii)
Celery	Leaf
Chamomile	Lawn Traneague
Chervil	
Chives	
Chives	Garlic
Coriander	
Dill	
Fennel	Bronze
Fennel	Green
Feverfew	
Garlic	Solent Wight
Helichrysum	Curry Plant
Hyssop	Blue
Lavender	Hidcote
Lavender	Munstead

Variety	
Lavender	Vera
Marjoram	French
Mint	Apple
Mint	Apple Variegated
Mint	Black Pepper
Mint	Curled Spearmint
Mint	Ginger Variegated
Mint	Indian
Mint	Moroccan
Mint	Spear
Mint	Spearmint (Garden Mint)
Mint	Variegated
Oregano	Common
Oregano	Compact
Oregano	Golden
Oregano	Hot & Spicy
Oregano	Variegated
Parsley	Curled
Parsley	Flat
Rosemary	Common

Variety	
Rosemary	Creeping (Haifa)
Rosemary	Tuscan Blue
Sage	Common
Sage	Icterina
Sage	Pineapple
Sage	Purple
Sage	Tricolor
Strawberry	Alpine
Tarragon	French
Thyme	Archers Gold
Thyme	Broadleaf
Thyme	Common
Thyme	Creeping Red
Thyme	Doone Valley
Thyme	Golden
Thyme	Lemon
Thyme	Lemon Variegated
Thyme	Silver Posie
Thyme	Silver Queen

Varieties

Make your herb area stand out with our fantastic range of over 60 varieties. Our 8.5cm square pot gives increased shelf life over a standard 9cm due to the increased compost volume. Our bespoke label gives uniformity to your grow your own area, when ordered alongside our pot and strip vegetable range. Available from early February.



1Ltr Herb Range

Balm	Lemon
Basil	Sweet
Chives	Garlic
Chives	
Coriander	
Fennel	Bronze
Fennel	Green
Helichrysum	Curry Plant
Lavender	Hidcote
Lavender	Munstead
Lavender	Vera
Mint	Apple
Mint	Black Pepper
Mint	Curled Spearmint
Mint	Moroccan

Mint	Spicata
Mint	Variegated
Oregano	Golden
Oregano	Hot & Spicy
Oregano	Variegated
Parsley	Curled
Parsley	Flat
Rosemary	Common
Rosemary	Miss Jessops
Rosemary	Tuscan Blue
Sage	Common
Sage	Icterina
Sage	Purple
Sage	Tricolor
Tarragon	French

Thyme	Archers Gold
Thyme	Common
Thyme	Doone Valley
Thyme	Lemon
Thyme	Lemon Variegated
Thyme	Silver Posie
Thyme	Tabor

Varieties

Over 30 of the best-selling varieties. This increasingly popular pot size is for customers looking for instant impact or a ready to use herb plant. Available from early February.

Carry Pack Sweet Pea Collection



Description

The sweet pea carry pack is a range of 4 selected sweet pea mixes including the ever popular Spencer Mix. The colourful carry pack handle makes this range eye catching and easy to shop. A great option for a promotional line.

Promotion size

30 trays (180 units) Full collection
15 trays (90 units) Half collection

Varieties

Spencer Mixed

Hanging Basket Mixed

Heritage Mixed

Patio Mixed

NOTE - Varieties may be subject to change

8.5cm Pot Connoisseur Sweet Pea

Description

A premium collection of the best single coloured named variety, pot sweet peas available. This collection is sure to catch the eye of everyone from the everyday gardener to the sweet pea connoisseur. Our 8.5cm square pots with large lock in labels, alongside our POS pack, gives a premium look to your sweet pea offering.

Promotion size

30 Trays of 18 (540) Full collection
16 Trays of 18 (288) Half collection

Varieties

Air Warden
Colour Scarlet

Alan Williams
Colour Mid Blue

Angela Ann
Colour Almond Pink

Beaujolaïs
Colour Deep Burgundy

Blue Velvet
Colour Deep Purple

Charlie's Angel
Colour Soft Blue

Frolic
Colour Pale Pink

Geranium Pink Improved
Colour Salmon Pink

Gwendoline
Colour Cerise Pink

King's High Scent
Colour Cream



Leamington
Colour Lavender

Midnight
Colour Dark Maroon

Mrs Bolton
Colour Pink on White

White Frills
Colour White

Winston Churchill
Colour Crimson

NOTE - Varieties may be subject to change

Carry Pack Strawberry Collection

Description

Our ever-popular strawberry carry pack is a fantastic addition to your grow your own range. 3 strawberry plants per strip, with a colourful attractive carry pack handle, across 4 popular varieties, provides a great value alternative to the standard 6 pack at an affordable price point.

Promotion size

30 trays (180 units) Full collection
or 15 trays (90 units) Half collection

Varieties

Symphony

Honeoye

Elsanta

Cambridge Favourite

NOTE - Varieties may be subject to change



Strawberry 8.5cm Pot Range

Description

A fantastic collection of the tastiest most popular strawberry varieties in an 8.5cm pot.

Promotion size

30 trays of 18 (540) Full collection
16 trays of 18 (288) Half collection

Varieties

Strawberry Albion
Strawberry Cambridge Favourite

Strawberry Cristina
Strawberry Elegance
Strawberry Elsanta
Strawberry Fenella
Strawberry Florence
Strawberry Honeoye
Strawberry Korona
Strawberry Ostara
Strawberry Romina
Strawberry Sweetheart

NOTE - Varieties may be subject to change



10cm Grafted Vegetable Range

Description

The best vegetable varieties are grafted on to the most vigorous root stock to create our great range of grafted vegetable plants. These offer a whole host of benefits to the customer, including greatly increased yield, longer cropping season, greater disease resistance, less heat needed so will perform better without a greenhouse and greater tolerance to nutritional disorders.

NOTE - Varieties may be subject to change

Promotion size

30 trays of 10 x 10cm pots (300 pots)
or 20 tray part collection (200 pots)

Varieties

Chilli Pepper Big Devil
Type Long Red

Cucumber Baby Rocky
Type Mini

Cucumber Kuper F1
Type Standard

Sweet Pepper Maccabi
Type Red

Tomato Agora (San Marzano Type)
Type Plum

Tomato Coeur des Boeuf
Type Heart Shaped Plum

Tomato Gusta
Type Mini Red

Tomato Kilates
Type Baby Plum

Tomato Maestria
Type Beefsteak Type

Tomato Shirley
Type Medium

Tomato Sungold
Type Yellow Cherry

Tomato Supersweet
Type Cherry

Tomato Vanessa
Type Medium



Chilli Micro Collection (6 trays)

Description

3 great grafted Chillies, giving you longer cropping season, greater disease resistance, less heat needed so will perform better without a greenhouse and greater tolerance to nutritional disorders.

Promotion size

6 trays of 10cm pots (60 pots)

Varieties

Chilli Habanero Chocolate

Chilli Jamaican Yellow

Chilli Pepper Naga



10cm Chilli Pepper Collection

Description

This is an exciting range of chilli peppers ranging from the mild(ish!) to the seriously hot including some of the hottest chillies in the world. In a 10cm red pot with eye catching dynamite chilli POS this range is sure to get customers talking. How hot can you handle?

Promotion size

30 trays of 10 x 10cm pots Full collection or 16 trays Half collection

Varieties

Chilli Pepper Bhut Jolokia

Chilli Pepper Hot Lemon

Chilli Pepper Habanero
Burkina Yellow

Chilli Pepper Hot Thai Dragon

Chilli Pepper Trinidad Perfume

Chilli Pepper Basket of Fire

Chilli Pepper Trinidad Scorpion

Chilli Pepper Scotch Bonnet Big Sun

Chilli Pepper Prairie Fire

Chilli Pepper Habanero Magnum
(Orange)

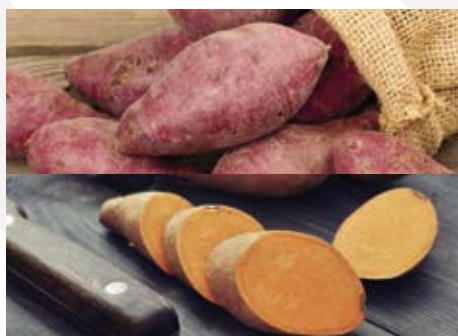
Chilli Pepper Demon Red

Chilli Pepper Habanero
Paper Lantern

NOTE - Varieties may be subject to change



10cm Sweet Potato Collection



Description

The sweet potatoes popularity has soared over the last few years due to its sweet taste and "superfood" status. Popular in supermarkets and restaurants alike it is now proving hugely successful in plant areas across the UK. With 4 different varieties available alongside our POS package, this is sure to create a real impact in your vegetable area.

Promotion size

30 trays of 10 x 10cm pots Full collection or 16 trays Half collection
4 varieties split as below

Varieties

Sweet Potato Beauregard

Sweet Potato Evangeline

Sweet Potato Bonita

Sweet Potato Murasaki

10cm Pea and Bean

Description

Increase variety over peak selling weeks with this expanded range of peas and beans in a 10cm pot. A fantastic array of varieties from red flowering runner beans to purple podded peas with a POS package to grab the attention.

Promotion size

30 trays of 10 x 10cm pots Full collection or 16 trays Half collection

Varieties

Bean Runner White Emergo

Bean Runner Enorma

Bean Runner Painted Lady

Broad Bean Crimson Flowered

Dwarf French Bean Orinoco

French Bean Hidalgo

Dwarf French Bean Canadian
Wonder

Pea Shiraz

Pea Tom Thumb

Pea Waverex



NOTE - Varieties may be subject to change

Heritage Tomatoes

Description

A range of 10 specially selected heritage varieties from years gone by with a stunning array of different colours and flavour profiles.

Promotion size

30 trays of 10 x 10 cm pots Full collection
or 16 trays Half collection



Varieties

Heritage Tomato Harbinger
Heritage Tomato Yellow Pear
Heritage Tomato St Pierre
Heritage Tomato Tigerella
Heritage Tomato First in the Field
Heritage Tomato Orange Brandy Wine
Heritage Tomato Cherokee
Heritage Tomato Orange Queen
Heritage Tomato Ananas
Heritage Tomato Cornue des Andes

NOTE - Varieties may be subject to change



1 Litre Vegetable Collection

Description

A great range of 15 popular varieties of pot vegetables in a 1 litre pot, ideal for customers who want a larger plant giving you sales for a longer period into the season and greater shelf life.

Promotion size

30 trays of 8 (240) Full collection
20 trays of 8 (160) Half collection

Varieties

Tomato Ailsa Craig
Tomato Alicante
Tomato Beefmaster
Tomato Gardeners Delight
Tomato Moneymaker
Tomato Roma
Tomato Shirley
Tomato Sungold
Chilli Pepper Apache
Chilli pepper Jalapeno
Courgette El Greco
Cucumber F1 Femspot
Cucumber Mini Hana
Sweet Pepper Red New Ace
Sweet Pepper Yellow Bell

NOTE - Varieties may be subject to change



Autumn Strip Range

Description

Our range of Autumn/Winter strip vegetables consists of over 35 varieties and offer fantastic value for money.



Varieties

Black Kale

Broccoli

Brussel Sprout

Cabbage Pointed Sweetheart

Cabbage Spring

Cabbage Winter

Cauliflower

Broccoli Sweet Stem

Curly Kale

Curly Kale Red

Kohl Rabi

Purple Sprouting Broccoli

Cabbage Pointed Red

Turnip

Lettuce Baby Leaf Mix

Lettuce Butterhead

Lettuce Cos

Lettuce Green Oak Leaf

Lettuce Little Gem

Lettuce Lollo Rosso

Lettuce Radicchio

Lettuce Red Little Gem

Lettuce Red Salad Bowl

Pak Choi White

Salad Leaf Oriental Mix

Salad Leaf Spicy Mix

Salad Leaf Italian Mix

Radish

Bean Broad

Beetroot

Carrot Baby Round

Chard

Spinach

Leeks

Onion Yellow Globe

Spring Onion White

Peas

Bare Root Wallflowers

Description

9 varieties (including 7 individual colours). All plants are vacuum cooled prior to dispatch to aid shelf life. Each box contains 15 individual sleeves with a minimum of 10 plants per sleeve.

Point of sale

Bespoke wooden display boxes and POS are supplied for each variety ordered

Availability

Mid-September onward

Minimum Order

3 Boxes (45 units of sale)

Deliveries

Deliveries are made 4 days per week - Tuesday through Friday
We aim to turn orders round in 48 hours (excluding weekends), but cannot guarantee this in times of exceptional demand.

Varieties

Persian Carpet

Tall Mixed Colours (35-40cm)

Harlequin

Dwarf Mixed Colours (20-25cm)

Cloth Of Gold

Yellow (25-30cm)

Fire King

Orange (25-30cm)

Primrose Dame

Primrose Yellow (25-30cm)



Scarlet Emperor

Scarlet Red (25-30cm)

Purple Shades

Purple (20-25cm)

Giant Pink

Pink (35-40cm)

Ivory White

White (35-40cm)

NOTE - Varieties may be subject to change